



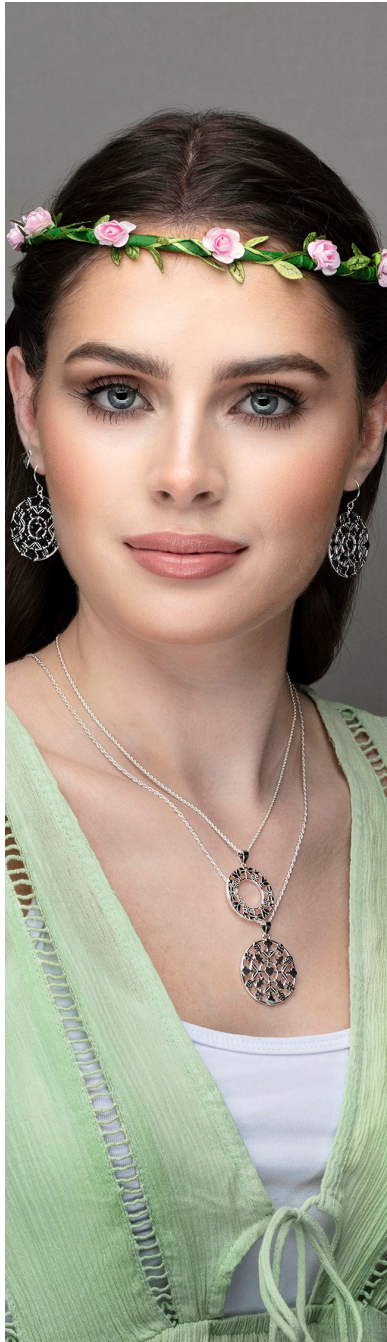
The Woodland Collection

Bloglet - April 2023



INTRODUCING

The Woodland Collection



This collection is perfect for any eco-lover looking for a way to express their passion and support for all things “nature.” This 20-piece collection features unique pendants and exquisite earrings with woodland inspirations. Featuring leaves and insects in mandala styles with a contemporary twist; and charms including ferns, dragonflies, ladybirds, moths, birds, tree rings and more, celebrating the naturally beautiful silhouettes of the wonders of nature.

Placed at an affordable price point, retailers can find inspiration from these beautifully modelled pieces. Whether creating a nature-inspired collection or adding pieces to a Fauna and Flora-inspired collection, these woodland pieces are sure to be a focal point. Each piece of this collection captures the simplistic beauty of nature around us.

The release of this collection comes as a celebration of CME’s sustainability journey and the positive strides we have made over the past few years.

In celebration of the positive strides we have taken on our journey to become carbon neutral, CME has chosen to give a percentage of the profits of this range to local wildlife and conservation charities.

Read more about our sustainability journey on the Professional Jeweller Website [HERE](#) and Explore our Zellar Profile [HERE](#)



Nature-inspired pieces have long been attractive to buyers and make up many of our most popular lines.

The new Woodland Collection has two distinct characteristics; Contemporary and Traditional



Top

Img1: [H5361/S](#)

Img2: [H5362/S](#)

Img3: [H5363/S](#)

Bottom

Img4: [H5365/S](#)

img5: [H5364/S](#)

These beautiful mandala-inspired pendants and earrings offer a contemporary twist on the natural beauty of the world around us. These pendants tell the story of a love of nature and feature the leaves of English woodlands.

Did you know that trees communicate with each other? The interconnecting design to the heart at the centre is inspired by the knowledge that we are now coming to understand that trees care for each other and talk to each other. Although we aren't able to hear the conversations, trees can communicate danger, ensure that their saplings have enough food and take turns for their time in the sun. Truly amazing!





H5366/S



H5367/S



H5368/S

These pieces celebrate the tiny creatures that are so important for woodland biodiversity - moths, dragonflies and ladybirds play their part in preying on smaller bugs and being preyed on by larger animals on the food chain.

This is the Importance of the circle of life. This is symbolised in these circular mandala charms and pendants

Did you know:

Moths also play a vital role in telling us about the health of our environment, like the canary in the coalmine did?



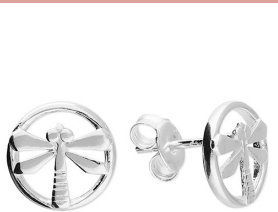
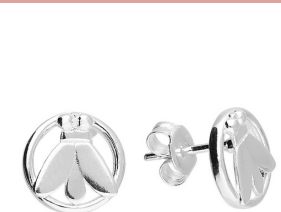
Top

Img1:

H5369/S

Img2:

H5370/S



Bottom

Img3;

H5371/S

img4:

H5372/S

Since they are so widespread and found in so many different habitats, and are so sensitive to changes, moths are particularly useful as indicators of a healthy environment and healthy ecosystems. Areas that are rich in moths are also rich in other invertebrates. They are an important element of the food chain and are prey for a wide range of birds, bats and other insectivorous animals.



H5583/S



H5582/S

These little earrings and pendant simply celebrate the love of trees! and that trees are the central heart of our planet. Trees reduce the 'Greenhouse' effect by removing carbon dioxide from the air and releasing oxygen. Each year a mature tree produces enough oxygen for 10 people. Trees are also an effective sound barrier and can limit noise pollution. Recent research shows that trees also help reduce the stress of modern life.

"I went to the woods because I wished to live deliberately, to front only the essential facts of life, and see if I could not learn what it had to teach, and not, when I came to die, discover that I had not lived."

– Henry David Thoreau



H5369/S



H5370/S



H5371/S



H5372/S

These pieces are more traditional and celebrate the simple love of some of our best loved creatures. The tap of the woodpecker as it signals Spring and the tiny nuthatch who loves to climb up and down trees. They can be marketed as charms or pendants.

TAKE A LOOK AT SOME OF THE OTHER FAUNA AND FLORA THEMED PIECES
THAT PAIR WELL WITH THE WOODLAND COLLECTION AND WOULD BE
PERFECT IN BUILDING A COLLECTION TO CALL YOUR OWN



H5619/C



H5620/C



H3591/C



H4390/S



H5509/Y



H4045/Y



H5016/S



H4876/Y



H5006/Y



H4996-45



H5018/Y



H4320/S



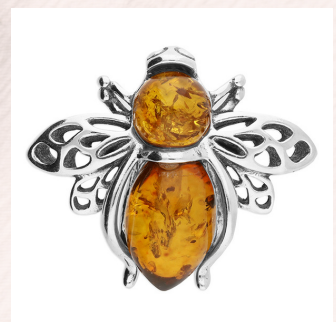
H4728/B



H4753/M



H3655/B



H4094/B



H4898/Y



H3203/C



H5341/Y



H4376/Y

ADD SOME WOODLAND CHARM TO YOUR KIDS COLLECTION



H5378/Y



H5380/Y



H5381/Y



H5386/Y



H5375/Y



H5379/Y



H5382/Y



H5385/Y



H5387/Y



H5373/Y



H5054/S



H4460/S

Thank You for Supporting CME!

Thought for the month

"Operating Sustainably is so important to CME.

We are constantly re-evaluating our procedures to keep ourselves accountable for our carbon outputs and want to keep our planet healthy and beautiful for generations to come"

Debbie Hunt, General Manager



The CME Showroom is Open!

Don't forget you can view our NEW lines in the CME Showroom.

Our buying team is always finding and sourcing exquisite new jewellery from around the world. So, come and join us in the showroom to see what is new this year!

To book your visit (strictly by appointment) simply email Debbie Hunt at debbie@cmejewellery.co.uk



Want to stay up to date with the latest?
Be one of the first to hear about discounts, special offers and more?

Why not view the latest collection launches, articles mentions and more by signing up to our [email newsletter](#) or viewing our [Linktree](#)?

